



**PRECISION METAL FABRICATION,
STAMPING & ASSEMBLIES**

A Griffiths Company



DELIGHT ALL CUSTOMERS | CHALLENGE OUR EMPLOYEES | LEAD OUR INDUSTRY



A Griffiths Company



VAST COMPONENT CAPABILITIES

K-TEK provides precision metal stampings, metal fabrications, weldments, mechanical assemblies and wire forms. From small, close tolerance parts, to large fabricated assemblies weighing over 250lbs, K-TEK has the highly skilled tradesmen and comprehensive manufacturing capabilities to deliver for your needs.

With over 220,000 square feet in two modern plant facilities, K-TEK invests heavily in the latest equipment and processes. With over a 50-year track record of providing Highest Quality, On Time Delivery, you are assured your expectations will be exceeded.







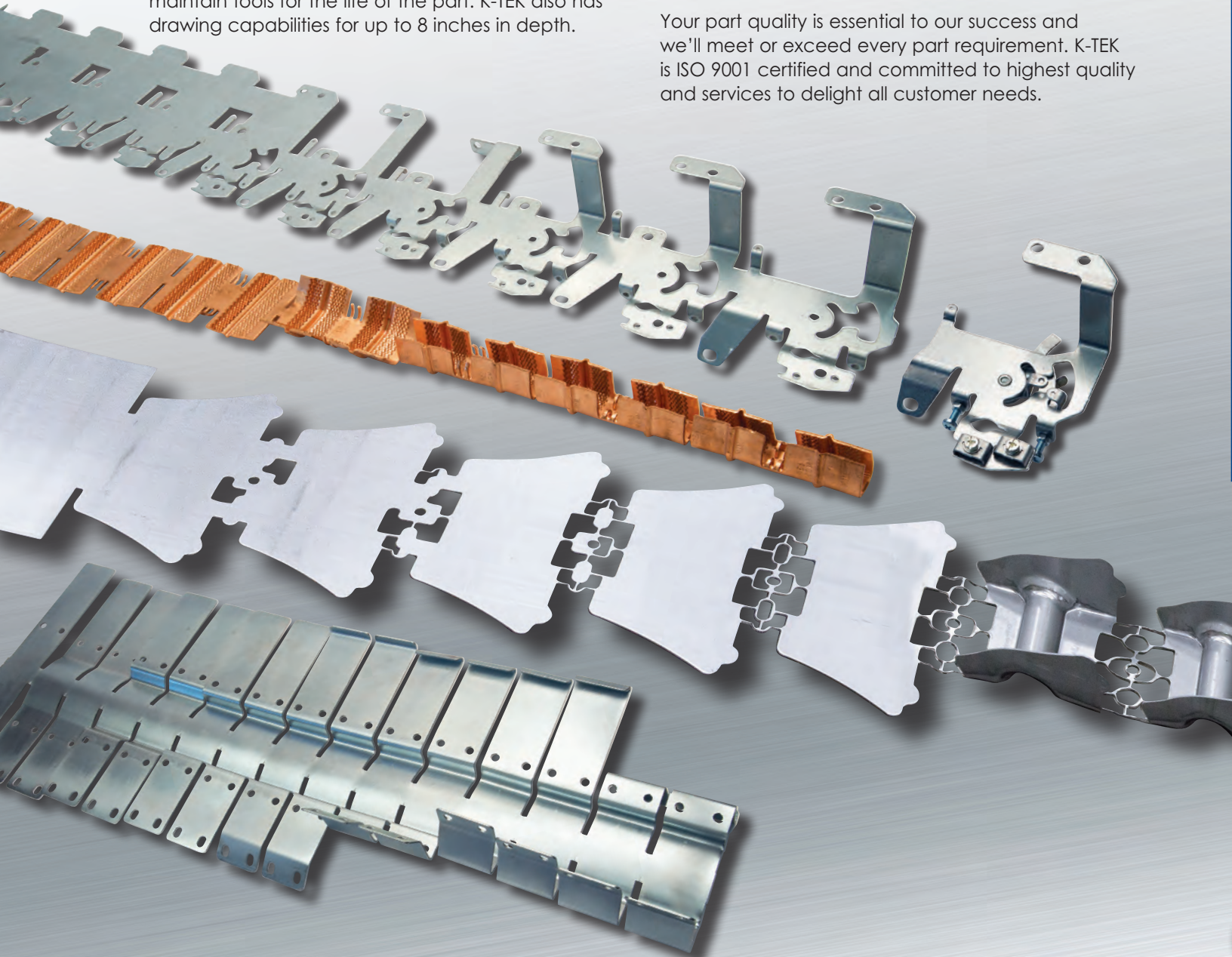
A Griffiths Company

SHORT RUN | PROGRESSIVE STAMPING | IN HOUSE TOOLING

Short runs, long runs and everything in between, K-TEK sets the standard for the highest quality at competitive prices. For example, our progressive stamping process conserves material, and reduces labor for cost effective high volume components. For short run stampings, K-TEK pledges to store and maintain tools for the life of the part. K-TEK also has drawing capabilities for up to 8 inches in depth.

Our complete in-house tool design and build capabilities assures you that the tooling will produce to your requirements. If you need design assistance, our five decades of experience serving virtually all industries, and our dedicated engineering group assures you of a successful part project.

Your part quality is essential to our success and we'll meet or exceed every part requirement. K-TEK is ISO 9001 certified and committed to highest quality and services to delight all customer needs.





With production stamping presses ranging from 20 ton to 400 ton, K-TEK has the capability to handle Short Run, Progressive Die Stamping, and your full tooling needs.



A Griffiths Company



A Griffiths Company

LASER PROCESSING | TURRET PUNCHING | MACHINING | WIRE FORMING

K-TEK laser cuts, drills, and welds 2D and 3D parts with high-speed Fiber Lasers systems. Our high speed CNC turret punching and bending operations can also produce parts extremely fast. We bend, form and shape parts which can include slots, knockouts, thread and tapped holes. Plus, K-TEK provides bending and forming on CNC Press Brakes and CNC wire forming including bending wire diameters from .08 to .625 inches in square/round ferrous and non-ferrous material.

And, with additional capabilities to weld, add hardware, and paint, K-TEK can go beyond just parts by providing value-added assemblies and final products.

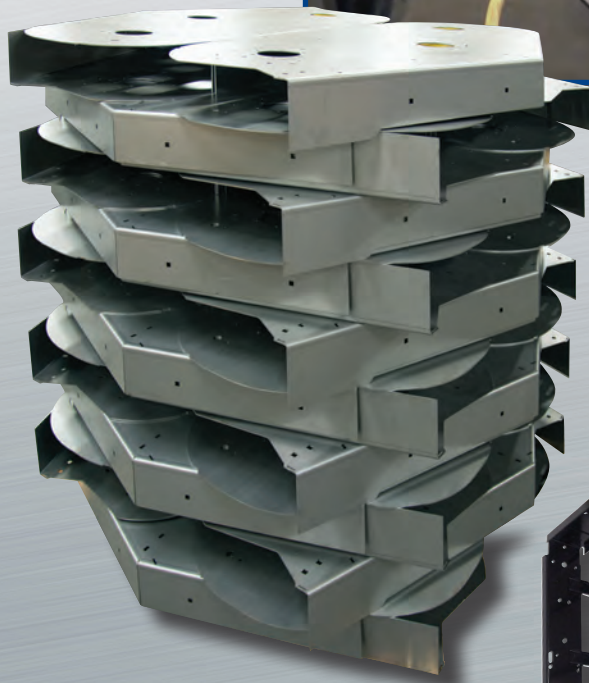


10,000 Watt Fiber Optic Lasers with a Remmert FMS System for lights-out manufacturing.

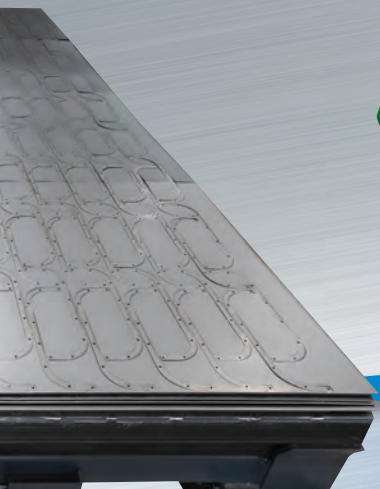
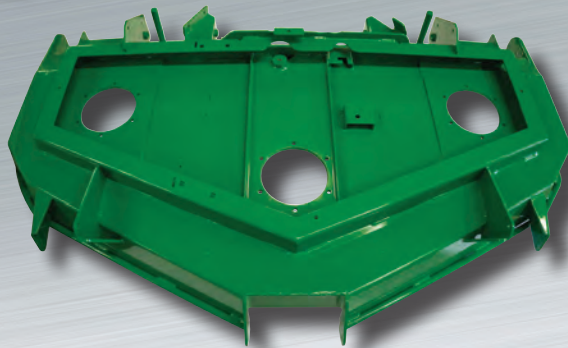


WELDING | ASSEMBLY

K-TEK welds simple brackets with threaded nuts and up to large commercial mower decks and other mechanical assemblies, some more than 100 pounds. Plus we assemble, paint and finishing sub-assemblies or final product. Our AWS certified welding includes MIG, TIG and resistance welding. All of K-TEK's fabricating capabilities are supported by complete assembly to your specifications.



K-TEK North Carolina and K-TEK Wisconsin facilities are fully equipped with robotic welding cells and additional support equipment.



A Griffiths Company



A Griffiths Company

K-TEK Wisconsin

750 Vandenberg Street | Baldwin, WI 54002
Phone (715) 684-3033 | Fax (715) 684-3050
Email kteksales@ktek-net.com

K-TEK Carolina

10240 Industrial Drive | Charlotte, NC 28134
Phone (704) 554-5657 | Fax (704) 554-1866
Email kteksales@ktek-net.com

www.ktek-net.com



ISO 9001

DELIGHT ALL CUSTOMERS | CHALLENGE OUR EMPLOYEES | LEAD OUR INDUSTRY